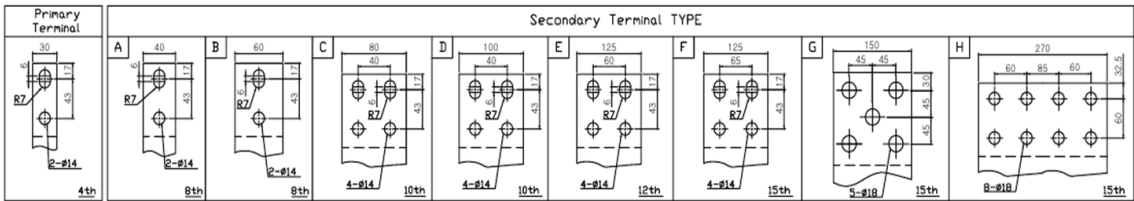
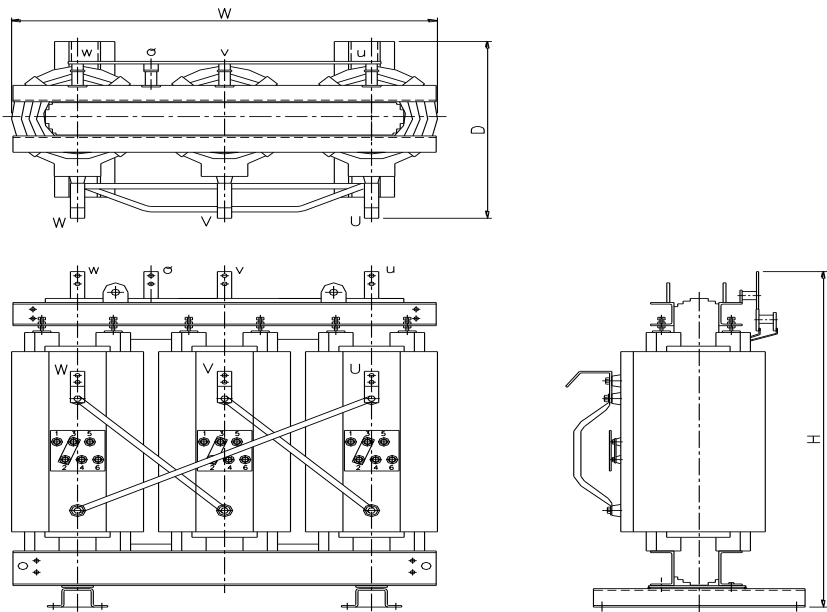


SPECIFICATION [SM-SACH(SABH)] **(Standard consumption efficiency)**



3P 6.6 or 3.3kV/380-220V

Capacity	% IZ	Efficiency (Load Rate)		No load current	Voltage fluctuation rate	External dimensions(mm)			Weight	LV terminal	
(kVA)	(%)	50%	100%	(%)	(%)	W	D	H	(KG)	T * W	Type
100	2.5	98.90	98.6	3.0	1.4	960	690	1150	920	8t*40	A
150	3.5	99.00	98.6	1.5	1.4	1005	690	1150	1050	8t*40	A
200	3.5	99.00	98.7	1.4	1.3	1135	690	1205	1050	8t*40	A
300	3.0	99.10	98.7	1.4	1.2	1135	690	1240	1550	8t*40	A
400	6.0	99.20	98.7	1.3	1.2	1280	810	1460	1750	8t*60	B
500	5.0	99.30	98.9	1.2	1.2	1280	810	1460	2000	8t*60	B
600	5.0	99.30	99.0	1.2	1.0	1360	810	1480	2400	10t*80	C
750	5.0	99.30	99.1	1.0	1.0	1400	810	1640	2400	10t*100	D
1000	6.5	99.40	99.1	1.0	1.0	1510	930	1740	2990	12t*125	E
1250	6.5	99.50	99.2	1.0	1.0	1630	930	1795	4000	12t*125	E
1500	7.0	99.50	99.3	1.0	1.0	2000	1025	1870	5000	15t*150	G
2000	7.0	99.50	99.3	1.0	1.0	2065	1025	1870	6600	15t*150	G

* The above excess capacity and unwritten SPEC. can also be manufactured by order.